

LIVE·LAUGH·CAMP!

# SALEM

TRAVEL TRAILERS AND FIFTH WHEELS



CAMPING  
COMFORT



# LIVE·LAUGH· CAMP!





26TBUD- Caramel decor (shown with optional TV)



# Salem Travel Trailers



*The innovative design of the Salem Travel Trailer reduces wind resistance which gives you better mileage and a smoother ride.*

**YEARS OF MEMORIES** is the expectation in a Salem RV. We understand that a **FAMILY** may come in many different sizes, which is why we offer **FUNCTIONAL FLOORPLANS** to meet your needs! With 80" interior heights, deep slides, and U-Shaped dinettes (most models), Salem values the meaning of **FAMILY ROOM!** Find a spot for all the necessities of camping with the overwhelming amount of storage throughout your Salem RV! Many of our employees have spent time camping, so we know what it takes to build an RV with **THE THINGS THAT MATTER!**



# 26TBUD

*COMFORTABLE* – More spacious than the traditional travel trailer bedroom, you will enjoy the rest and relaxation you deserve on your vacation! Welcome a cool breeze with our two functional bedroom windows!

*ACCOMMODATING* – Maximize living and sleeping space in this model, without losing any of the features you want for your camping adventures! Triple bunks, a U-Shaped dinette, and a jiffy sofa allow everyone to bring a friend!



26TBUD- Bunk Area



26TBUD- Bedroom



32BHDS- Pewter decor (shown with optional TV)



30KQBSS- Bedroom



32BHDS- Bunk Area (TV and jiffy sofa optional)



32BHDS- Bedroom



# 32BHDS

*FAMILY*- Introducing the ultimate family camper! Equipped with a private bunk room, 2 deep slides, and an outside kitchen!

*FRESHNESS*- Salem helps keep your coach clean, as we equip our units with easy to clean countertops and one piece, full length, linoleum flooring.

*PRACTICAL*- Keep the mess outside with an exterior kitchen and an exterior entry into the bathroom. The private bunk area allows the kids to have their own space!



# 30KQBSS

**ENTERTAINING** – A U-Shaped dinette in the living area along with a booth dinette in the bunk room, so you always have plenty of space for friends and family to enjoy a nice meal or your game of choice!

**FUNCTIONALITY** – The booth dinette found in the private bunk room drops into a bed for extra sleeping space. Our outside kitchen is equipped with a standard, bumper mounted, swing arm grill, so the camp chef will have everything needed to prepare your camp favorites.



30KQBSS, 32BHDS, 33BHOK - Exterior kitchen



30KQBSS- Bunk Area (TV optional)



30KQBSS- Pomegranate decor (shown with optional TV)



33BHOK Leather decor (shown with optional TV)



## Salem Fifth Wheels

**DESIGNED** for comfort no matter the adventure you encounter in a Salem RV. As leaders in **DESIGN INNOVATION** we provide you with unique fifth wheel floor plans. You will find the same **FEATURES YOU LOVE** about our travel trailers! The his and her bedroom entrance in the **33BHOK** is just one of the fifth wheel features that adds to a **SPACIOUS** and **PRIVATE** camping experience.



# 33BHOK

*INVITING*— In the 33BHOK, we took the features and design you love and manufactured them into a fifth wheel! An all new standard fifth wheel fiberglass front cap gives your unit an eye appeal to turn heads on the highway and campsite!

*REFRESH*— Head back to reality completely refreshed after taking on life's adventures. The comfortable bedrooms found in all of our units provide total comfort, so when it's time to head home you feel relaxed and refreshed!



Standard fiberglass fifth wheel front cap.



33BHOK- Bedroom





30KQBSS- Pomegranate decor (shown with optional TV)

# Interior Features

- |   |  |  |
|---|--|--|
| A. Overhead Cabinet 14" Deep for Large Plates | G. Decorative Overhead Dining Light        | M. Mini Blinds                               |
| B. Huge Storage Drawer at Base of Dinette     | H. Solid Woodframe Mortise and Tenon Doors | N. One Piece Plank Wood Linoleum Flooring    |
| C. 80" Interior Height                        | I. High Rise Faucet and 60/40 Sink         | O. Residential Style Carpet                  |
| D. (4) Cube Speaker Sound System              | J. U-Dinette (Bunk Models)                 | P. 26" LCD TV (Optional)                     |
| E. High Definition Self Edge Countertops      | K. Residential Size Microwave              | Q. Full Extension Ball Bearing Drawer Guides |
| F. AM/FM, CD Player w/ MP3 Hookup             | L. 3-Burner Range with Oven and Vent Hood  |  |



# SALEM FEATURES



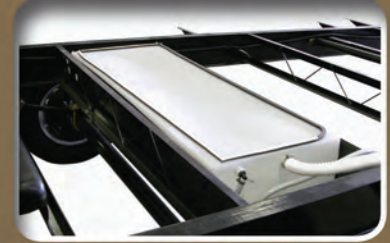
Self Edge Countertops



High Rise Faucet and 60/40 Sink



Extra Large Pass-Thru Storage



Heated and Enclosed Fresh Water Tank



Solid Doors to Bedroom



Full Extension Ball Bearing Drawer Guides



Extra Large Pot and Pan Drawer at the Dinette Base



26" Spin Around TV Ent. Center (select floorplans-shown with optional TV)



The Standard Exterior Kitchen on the 30KQBSS, 32BHDS and 33BHOK is a Great Way for the Camp Chef to Enjoy the Great Outdoors.



Oversize Storage Drawer Under the Sofa



Silverware Drawer



16 gal. Per Hour G/E Quick Recovery DSI Water Heater



Command Center



## STANDARDS AND OPTIONS

### CONSTRUCTION AND EXTERIOR

- Full Walk on 1 Piece Seamless Roof w/ 12yr. Warranty
- Extra Large Full Pass Through Storage (per floorplan)
- E-Z Lube Axles
- Cold Crack and Mildew Resistant Vinyl Patio Awning
- Safety Glass Windows
- Steel Framed 30" Smooth Radius Fiberglass Main Entry Door
- Fender Skirts
- Powder Coated I-beam frame
- Cambered Chassis
- Enclosed Fresh Water Tank in a Heated Compartment
- 16 Gal. per hour G/E Quick Recovery DSI Water Heater
- Water Heater By-pass
- Nitrogen Filled Tires
- 2" Wall Construction 16" (or less) on Center
- R-7 Fiberglass Insulation Throughout
- 13 ply Cross Micro-Laminated Beam Header above Slide-outs
- Triple Sealed Slideouts
- Electric Slide-Out Systems (Flush Floor)
- Swing Arm Entry Assist Handle
- Two Marine Grade Exterior Speakers
- Electric Front Jacks (Fifth Wheels)
- Fiberglass Front Cap (Fifth Wheels)

### KITCHEN

- Dometic® Double Door Refrigerator (2 yr. Warranty)
- High Rise Faucet
- Deep Basin 60/40 Residential Style Sink
- Microwave with Carousel
- 3-Burner, High Output Range with Oven (2 yr. Warranty)
- Range Hood with 12-Volt Exhaust Fan and Light
- One Piece Plank Wood Linoleum Flooring
- Self Edge Kitchen Countertops
- Solid Wood Drawers

- Knife Rack (behind cooktop)
- Large Overhead Cabinets
- Wall-Mounted Systems Convenience Panel
- Oil Rubbed Bronze Hardware
- Full Extension Ball Bearing Drawer Guides
- Abundant Cabinet Storage

### LIVING ROOM

- 80" Interior Height Travel Trailers (101" Fifth Wheel models)
- Ducted 13,500 BTU Roof Air Conditioner w/ Quick Cool
- Huge Storage Drawer at Sofa Base (Select Models)
- Extra Large Pedestal Booth Dinette w/ Large Drawer (Most models)
- Large Dinette Picture Window
- Digital TV Antenna and Booster
- Standard AM/FM Stereo w/ CD and 4 Cube Speakers
- Extra Large Overhead Cabinets
- Patio Door with Vertical Blinds (37BHSS2Q, 36BHBS)
- Decorative wall light
- 25K BTU Suburban Forced Air DSI Furnace with Digital Thermostat (2 yr. Warranty)
- In-Floor Ducted Heat

### BEDROOM

- Evergreen Mattress
- Plush Comforter and Headboard
- Strut Lifted Storage Area under Bed
- Bedside Mirrored Wardrobes with Shelf
- Bedside 110v Power Outlets (2)
- Solid Bedroom Privacy Doors (Most Models)
- Storage Shelf Above Bed

### BATHROOM

- 12-Volt Power Bath Roof Exhaust Vent
- Wooden Medicine Cabinet with Mirrored Door
- Fresh-Water Flush Toilet
- Tooth Brush Holder and Towel Ring
- Vinyl Tub Surround

### SECURITY AND SAFETY

- LP Leak detector
- Smoke Detector
- LED Docking Lights (Fifth Wheels)
- Carbon Monoxide Detector
- Fire Extinguisher
- Hitch Light (Travel Trailers)
- Amber Patio Light
- Welded Heavy Duty Safety Chains (Travel Trailers)
- Electric Brakes (all wheels)
- GFI Receptacles
- ANSI 119.2 Certified
- Meets all National Highway Administration Specifications

### SALEM OPTIONS

- Stabilizer Jacks (Travel Trailer (4) or Fifth Wheel (2))
- Cable TV/Satellite Hook-up
- Skylight over Tub
- 30-lb LP Bottles with Cover and Auto Change Over (Travel Trailers)
- Neo-Angle Glass Shower w/ Tub Surround (27RLSS, 27RKSS, 29RKSS, 30FKBS, 36BHBS, 37BHSS2Q)
- 15,000 BTU Ducted Air w/Quick Cool

Contact your Salem dealer for a complete list of options





# CONSTRUCTION STANDARDS

Rest assured your unit is built with pride and integrity by our dedicated team of craftsmen.



**E-Z LUBE**  
BEARING LUBRICATION SYSTEM

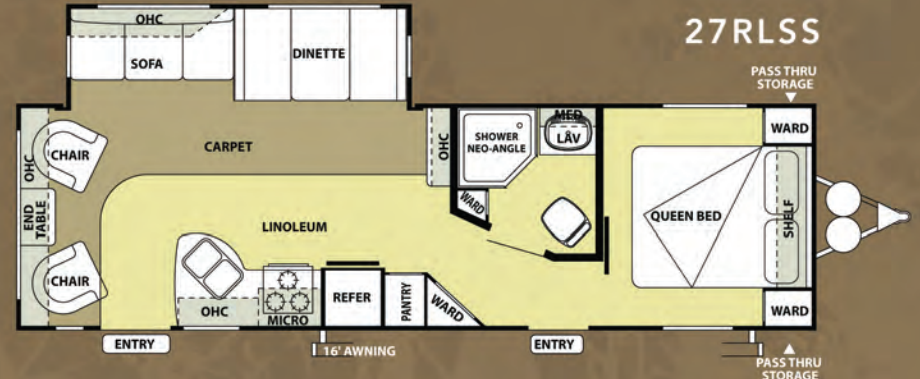
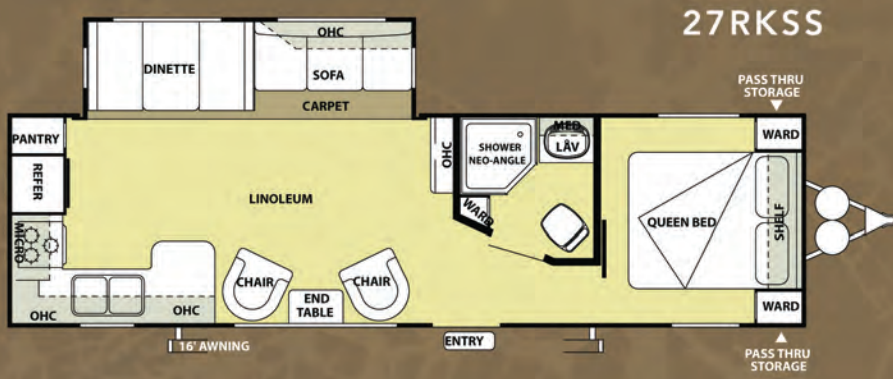
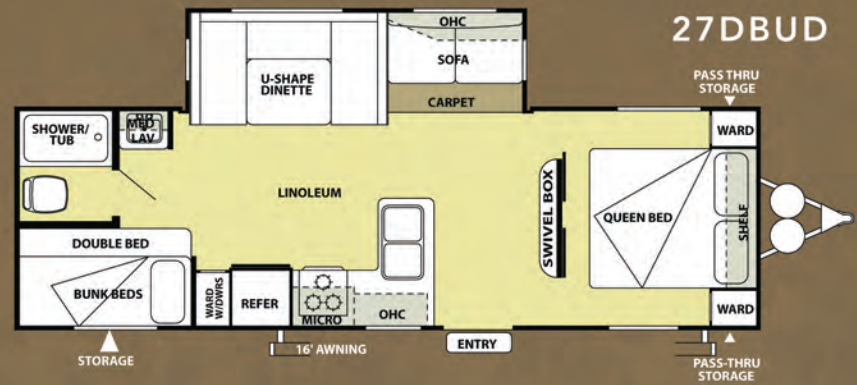
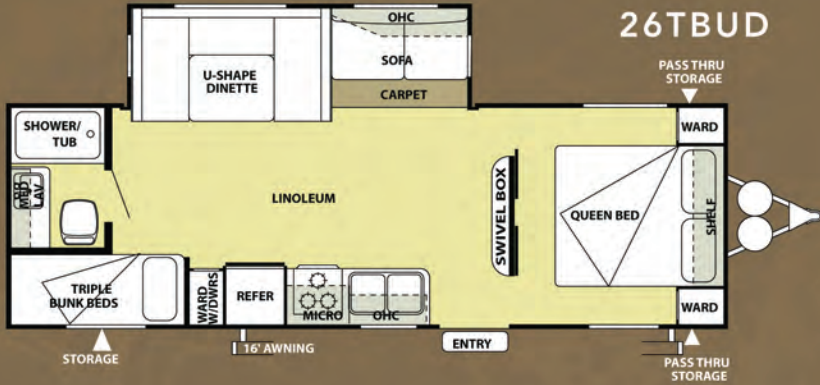


The E-Z Lube system allows grease to flow with ease to both the outer and inner bearings for a complete repack. No disassembly required.

- |   |  |  |                           |
|---|--|--|---------------------------|
| A. Radius Triple Entry Steps                        | F. .024 Aluminum Siding                      | L. Smooth Rolled Skirting                | R. Stain Resistant Carpet |
| B. 2" X 3" Floor Joists 12" on Center               | G. 5" Bowed Truss Roof Rafters               | M. In Floor Ducted Heat                  | S. Hitch light            |
| C. 5/8" 5-Ply Tongue & Groove Plywood Floor Decking | H. Seamless, One Piece Roof (12 yr.Warranty) | N. Diamond Plate Rockguard               | T. E-Z Lube Axles         |
| D. 2" Wall Studs 16" or Less on Center              | I. R-7 Fiberglass Insulation Throughout      | O. 3/8" Roof Decking (Full Walk-On Roof) | U. Premium Graphics       |
| E. Radius Fiberglass 30" Entry Door                 | J. Extra Large Full Pass Thru Storage        | P. LP Bottle Cover w/ Easy Access        |                           |
|   | K. Clamp Ring Safety Glass Windows           | Q. 13.5K Ducted Roof, High Output A/C    |                           |



# TRAVEL TRAILER FLOORPLANS

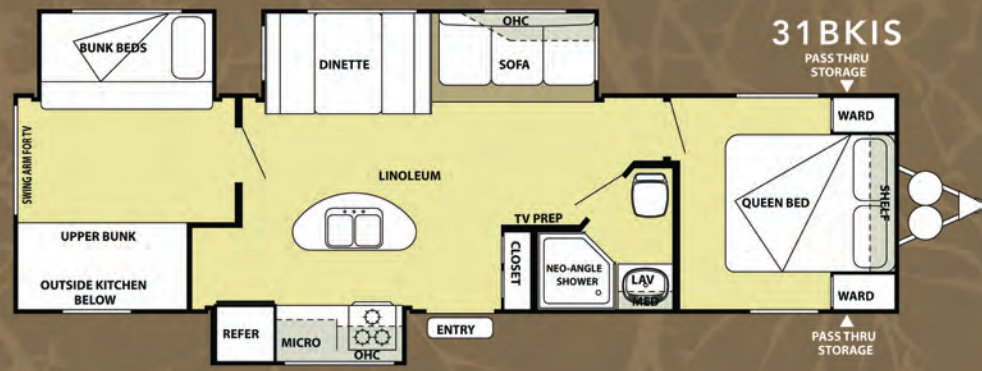
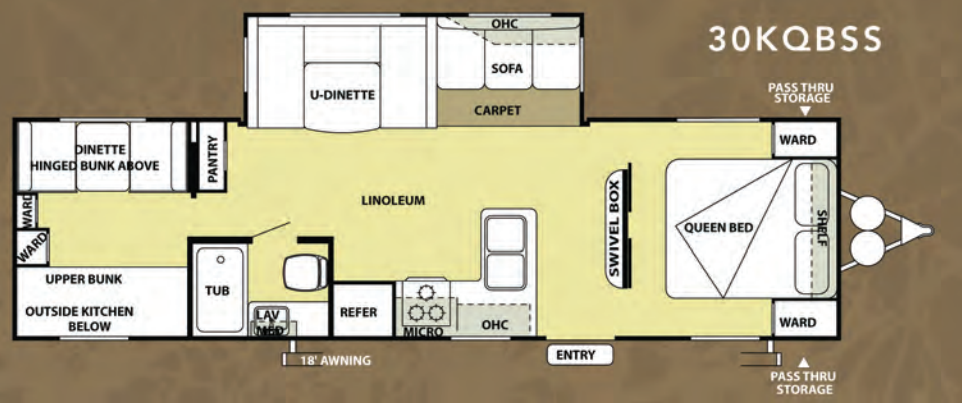
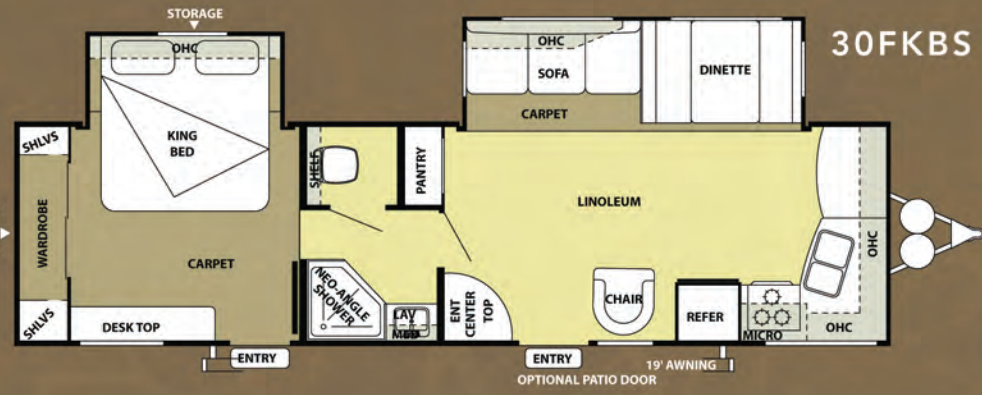
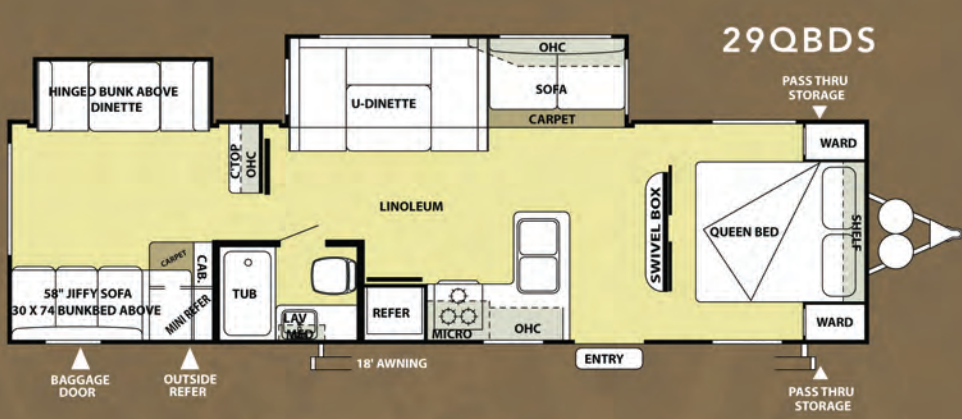


## SPECIFICATIONS

MODEL	26TBUD	27DBUD	27RKSS	27RLSS
Hitch Weight (lb)	815	772	720	650
Axle Weight	4975	5392	5635	5723
Dry Ship Weight	5780	6164	6355	6373
CCC (Cargo Cap.)	1887	1549	1327	1239
Ext Length	29' 0"	29' 6"	33' 3"	32' 2"
Ext Height	11' 2"	11' 2"	11' 2"	10' 11"
Fresh Water Cap	40	40	40	40
Black Water Cap	32	32	32	35
Grey Water Cap	34	34	69	69
Tire Size (in)	15"	15"	15"	15"
Awning Size (ft)	16'	16'	16'	16'





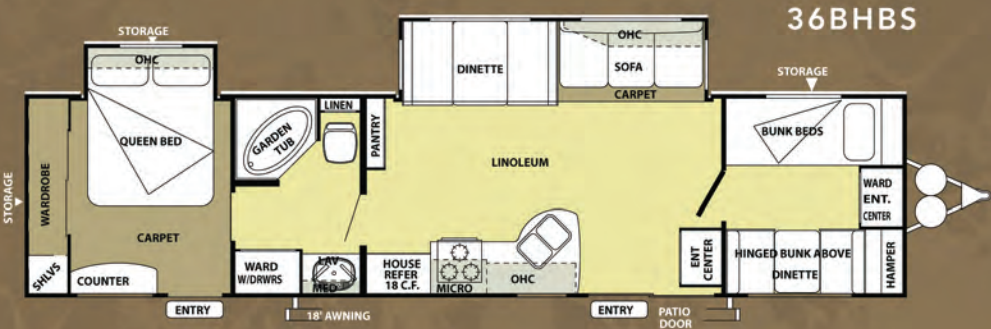
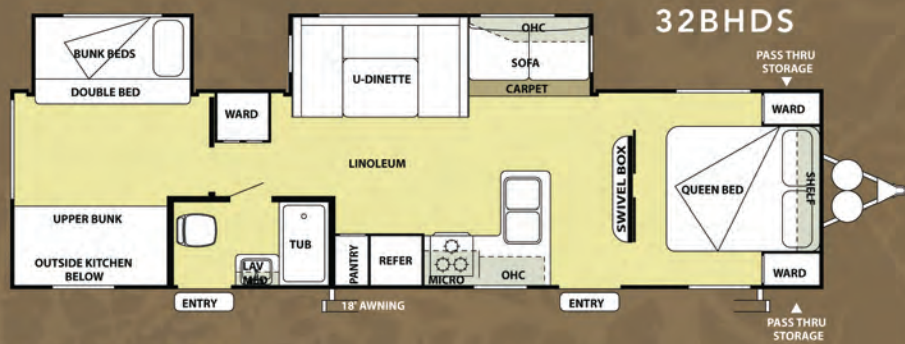
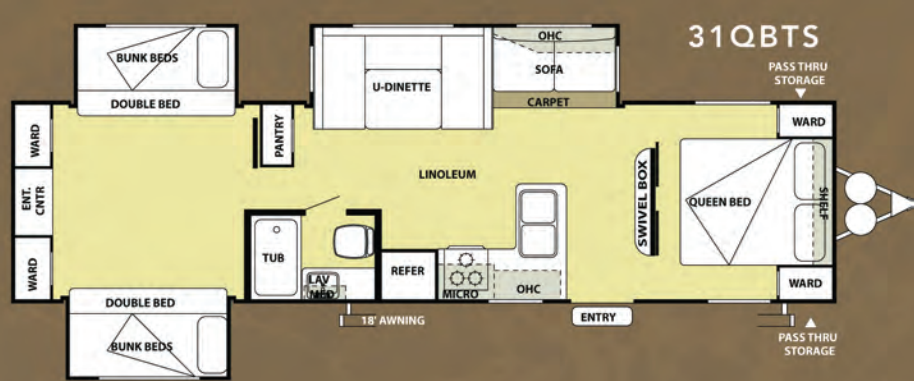


**SPECIFICATIONS**

MODEL	29QBDS	30FKBS	30KQBSS	30QBSS	31BKIS
Hitch Weight (lb)	899	832	899	980	TBD
Axle Weight	6019	6822	5985	5595	TBD
Dry Ship Weight	6918	7654	6884	6575	TBD
CCC (Cargo Cap.)	4082	3300	4137	4527	TBD
Ext Length	34'0"	34'9"	33'0"	33' 2"	TBD
Ext Height	11'2"	11'2"	11'2"	11'2"	TBD
Fresh Water Cap	42	42	42	42	TBD
Black Water Cap	27	27	27	27	TBD
Grey Water Cap	30	30	30	30	TBD
Tire Size (in)	15"	15"	15"	15"	TBD
Awning Size (ft)	18'	21'	21'	21'	TBD

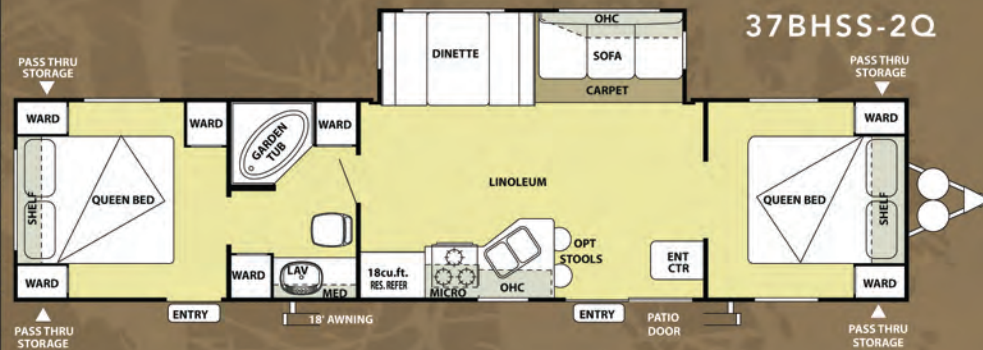


# TRAVEL TRAILER FLOORPLANS (CONTINUED)



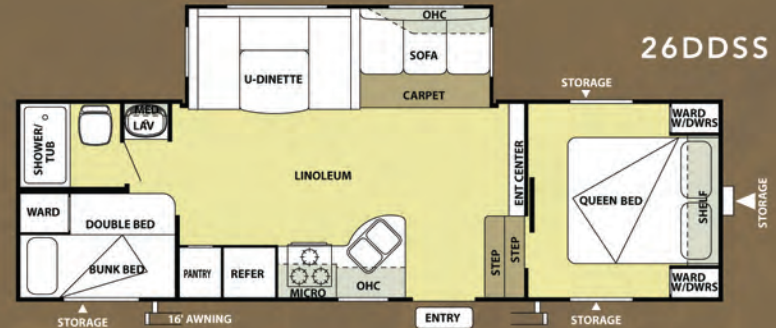
## SPECIFICATIONS

MODEL	31QBTS	31KQBTS	32BHDS	36BHBS	37BHSS2Q
Hitch Weight (lb)	885	885	859	720	970
Axle Weight	7255	7255	7096	7171	6630
Dry Ship Weight	8140	8140	7955	7891	7600
CCC (Cargo Cap.)	2867	2867	3026	2951	3492
Ext Length	35'6"	35'6"	35'8"	36'7"	39'
Ext Height	11'2"	11'2"	11'2"	11'2"	11'2"
Fresh Water Cap	40	40	40	42	42
Black Water Cap	34	34	32	27	27
Grey Water Cap	35	35	66	30	30
Tire Size (in)	15"	15"	15"	15"	15"
Awning Size (ft)	21'	21'	16'	21'	21'





# FIFTH WHEEL FLOORPLANS



## SPECIFICATIONS

MODEL	24RLS	26DDSS	29RKSS	33BHOK
Hitch Weight (lb)	1220	1272	1418	1704
Axle Weight	5474	5831	6414	7403
Dry Ship Weight	6694	7103	7831	9107
CCC (Cargo Cap.)	1488	4291	3709	2719
Ext Length	29'6"	30'9"	34'1"	37'9"
Ext Height	12'4"	12'3"	12'3"	12'9"
Fresh Water Cap	40	40	40	40
Black Water Cap	32	34	27	32
Grey Water Cap	64	32	62	66
Tire Size (in)	15"	15"	15"	15"
Awning Size (ft)	16'	21'	18'	16'

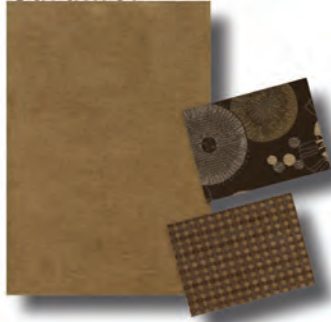


Pillows and bunk bedspreads on floorplans are for illustration purposes only and are not included with your unit.

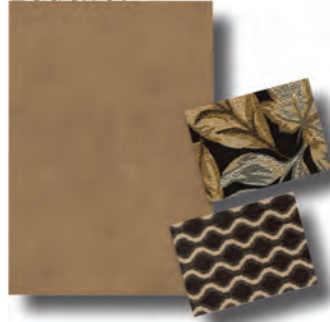


## Decor Options

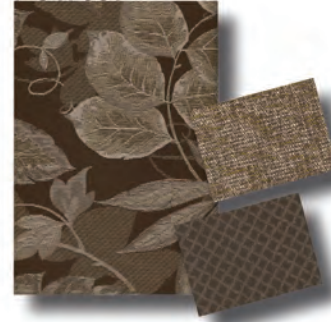
### Caramel



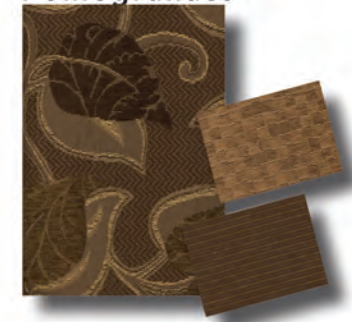
### Leather



### Pewter



### Pomegranate



### PRE-DELIVERY INSPECTION FACILITY

20,000 square feet of quality assurance. The bare essentials for a premium product. This state-of-the-art facility gives immediate daily feedback to production for quality assurance in every unit built.



Forest River, Inc. encourages our customers to purchase their Forest River products from a local dealership whenever possible for the following reasons:

- 1) Forest River, Inc. dealers are independently owned and operated businesses so priority service and scheduling is at their discretion and is often provided to customers that purchased their unit at that dealership.
- 2) Purchasing locally allows customers to establish meaningful relationships with a dealer, enhancing the RV experience through assistance with product questions, user tips or RV regulations for your state or country, and much more!
- 3) Canadian customers must meet requirements to bring an RV purchased out of the country to their home. These requirements may involve additional inspections and certifications, taxes and fees. Your local Canadian Dealer is a professional at meeting these requirements.
- 4) Scheduling timely warranty repairs and adjustments through a local dealership provides far greater flexibility and convenience to you, the customer!

It is the goal of Forest River, Inc. that all of our RV owners fully enjoy the RV experience and that customer satisfaction meets or exceeds their expectations!

### 24/7 EMERGENCY ROADSIDE ASSISTANCE

For a worry-free ownership experience Forest River includes one

## Coach-Net<sup>®</sup>

RV Technical & Roadside Assistance

year of Coach-Net RV Technical & Roadside Assistance with each RV purchase. Whether new to the RV lifestyle or an experienced RV enthusiast, Forest River owners have 24/7 access to technical, operational and emergency road service coverage throughout the US & Canada. Coach-Net's fast, dependable service is just a phone call away.

# SALEM



Learn More  
Scan this barcode using a QR Reader on your smart phone to learn more about Forest River.



A Berkshire Hathaway company.

Forest River, Inc.  
55470 C.R. 1  
Elkhart, IN 46515  
(574) 389-4600  
[www.forestriverinc.com/salem](http://www.forestriverinc.com/salem)  
[www.forestriveraccessories.com](http://www.forestriveraccessories.com)

**FREE MEMBERSHIP**  
to Forest River Owners' Group

[www.forestriverfrog.com](http://www.forestriverfrog.com)

